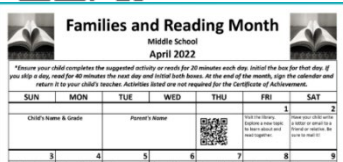


Did You Know?

Join Us in Celebrating Families & Reading Month

The Keystone State Literacy Association is committed to developing a love of reading in all children across Pennsylvania. KSLA is promoting April as **Families and Reading Month** throughout Pennsylvania calling attention to the importance of families reading together at home. Parents are a child's first – and most important – teacher. Research has shown that children who come from homes where reading is valued usually become more successful readers. KSLA continues to stress to parents and caregivers the importance in developing their children's lifelong reading pattern.



KSLA invites you to participate with other districts across the state to promote the importance of reading at home. We encourage you to use your imagination or utilize the ideas in the packet to create an exciting month that promotes, encourages, and develops a love of reading.



"A love of reading will take one through life in a wonderful way."

New Resources

Classroom Quick Tips and Academic Strategies

Educators know that there are students who require support in addressing unfinished learning from prior grades. Since time is a scarce commodity in classrooms, strategic instructional choices about which content to prioritize must occur. The newly created documents below offer instructional supports:

- **Classroom Quick Tips: Instruction, Assessment, and Time Management**

Each 1-page document offers easily doable instructional, assessment, and classroom/time management strategies – offering general strategies, ELA-, and math-specific suggestions for implementation.

- **Academic Strategies**

Using the key concepts in the left-hand column, educators can complete a self-check for current instructional and assessment practices. After identifying areas of need, the right-hand column offers specific strategies/resources that may strengthen the selected concepts.

Click the QR code!



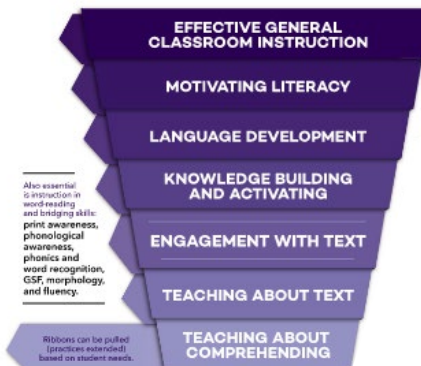
Research

The Science of Reading Comprehension Instruction

Click to read the entire article

"Given the absolute necessity of foundational word-reading skills, it is tempting to think that instruction should begin with a focus on developing those and later turn to comprehension. However, research has supported a simultaneous, rather than sequential, model of reading instruction. Along with the development of phonological awareness, print concepts, and alphabet knowledge, young learners in preschool and early elementary school benefit from efforts to develop oral language comprehension, including efforts to develop oral comprehension of written language... The relation between word-reading instruction and reading comprehension instruction is more synergistic than competitive."

Nell K. Duke, Alessandra E. Ward, P. David Pearson

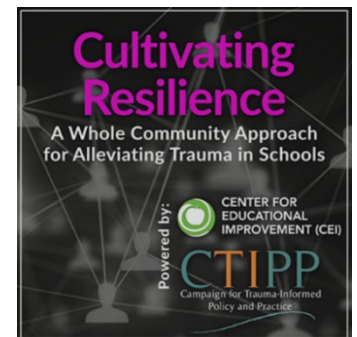


Voices of the Air

Katherine Mansfield

But then there comes that moment rare
When, for no cause that I can find,
The little voices of the air
Sound above all the sea and wind.
The sea and wind do then obey
And sighing, sighing double notes
Of double basses, content to play
A droning chord for the little throats—
The little throats that sing and rise
Up into the light with lovely ease
And a kind of magical, sweet surprise
To hear and know themselves for these—
For these little voices: the bee, the fly,
The leaf that taps, the pod that breaks,
The breeze on the grass-tops bending by,
The shrill quick sound that the insect
makes.

Podcast Series



**Trauma in Schools #30 —
Nurturing the Emotionally Safe
School Environment**

MENTAL HEALTH RESOURCES

Explore a variety of resources for parents, educators, and professionals serving children and youth in school and community settings.

[Education.pa.gov/MentalHealth](https://education.pa.gov/MentalHealth)

EXPLORE MORE ONLINE RESOURCES:

EQUITABLE PRACTICES HUB

Resources for educators, parents, and professionals to create a healthy and safe environment.
[Education.pa.gov/EquityAndInclusion](https://education.pa.gov/EquityAndInclusion)

ARP ESSER SEL GUIDANCE

A Guide to help LEAs decide how to use ARP ESSER funds to improve learning environments through social and emotional learning (SEL) and mental health supports.
[Education.pa.gov/ARPESSERSEL](https://education.pa.gov/ARPESSERSEL)

PA CAREER READY SKILLS

Resources for learners to prepare for postsecondary education, workforce training, and career pathways.
[Education.pa.gov/CareerReadyPA](https://education.pa.gov/CareerReadyPA)

Email questions to:

dsimaska@pa.gov
rbaumleama@pa.gov