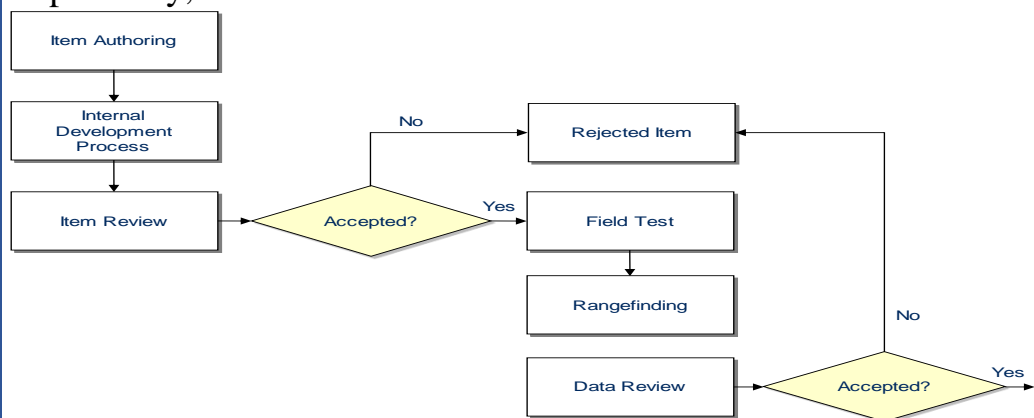


## Did You Know?

Every passage and item undergoes approximately a two-year process for eligibility to appear as a core item on an operational test. The process includes professional writers, PDE staff, and, most importantly, PA educators.



## Professional Learning

On the PDE website, the ELA division has provided several resources for work with Text Dependent Analysis. Click on the link below to explore YouTube videos and the 2014 TDA Study. PDE continues to collaborate with the Center for Assessment and plans to provide an update to the most recent work with TDAs.

### TDA



SAS Website – ELA Assessment Community

<http://pdesas.org/Community>

Please join us in the ELA Assessment Community as we provide an avenue to connect with you!

## Professional Opportunities

We are always looking for educators to join the PDE team for committee work. The committees include:

PSSA Range Finding	Keystone Range Finding
PSSA Item Review	Keystone Item Review
PSSA Data Review	Keystone Data Review
PSSA Bias Review	Keystone Bias Review

If interested, please visit the following link to apply.

<http://www.cvent.com/surveys>

VOL 1 ISSUE 1  
MAY 2017

Our monthly ELA Assessment eBlast will focus on providing the following: insight around standardized assessment, professional learning for ELA classroom assessment, professional opportunities, and a question/answer section.

Email questions to:

[rbaumleama@pa.gov](mailto:rbaumleama@pa.gov)

[dsimaska@pa.gov](mailto:dsimaska@pa.gov)

The annual Pennsylvania System School Assessment is a standards-based, criterion-referenced assessment which provides students, parents, educators and citizens with an understanding of student and school performance related to the attainment of proficiency of the academic standards.

**The publication's content does not necessarily reflect the views or policies of the PDE, nor does mention of trade names, commercial products, or organizations imply endorsement by the PDE.**