

# PDE - English Language Arts LEARNING COMMUNITY



## WHO WE ARE

Welcome to the [PDE - English Language Arts Learning Community](#). The Learning Community provides an avenue to connect with educators of all levels across the Commonwealth.

The Learning Community also provides a collaborative environment to extend and enhance the discussion of important issues with PDE staff and colleagues regarding teaching, learning, and assessing.

Please join us by discussing and sharing important issues, challenges, and ideas that promote the effective and successful teaching, learning, and assessing of ELA throughout the Commonwealth.

## FEATURED PODCAST

*Natalie Wexler, education journalist and author of "The Knowledge Gap," hosts the Reading Comprehension Revisited podcast.*

*In six short (~30 minute) episodes, Natalie tackles crucial questions such as, why do students from low-income backgrounds typically score lower on reading tests? Why do improvements in early grades fade out as students advance to higher levels? And most significantly, why haven't substantial investments in education reform delivered expected results?*

[Podcast - Knowledge Matters Campaign](#)

## DID YOU KNOW ...

*Thank you!*

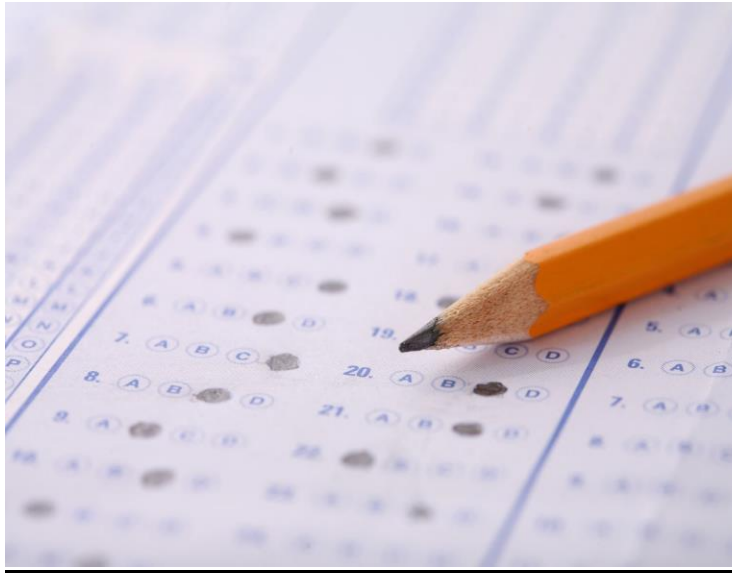
Thank you to everyone who worked behind the scenes making the SAS Conference fantastic!

Thank you to everyone who presented at the SAS Conference, especially the 4 districts: State College Area, West Shore Area, Gettysburg Area, and Halifax, who presented on Structured Literacy with PDE and PaTTAN.

**Save the date for SAS 2024**

**December 8-11, 2024**

## Assessment Information



*The DRC PSA training site has been created to host some of the most frequently accessed resource and training materials. This site supplements what is already available to you on the DRC INSIGHT Portal and will be updated as new resources become available.*

### [PSA Assessments](#)

\*\*\*

### Fall-Winter 2023 Assessment Update

*For the most up-to-date information on PA assessments -*

### [2023 Fall Assessment Update](#)

## Article on Adolescent Reading

*To encourage more adolescents to read books, listening to their perspectives and experiences of book reading is a good start.*

By: Katherine Wilkinson, Valentina Andries, Danielle Howarth, Jane Bonsall, Shari Sabeti, and Sarah McGeown

### [Reading During Adolescence: Why Adolescents Choose \(or Do Not Choose\) Books](#)



## 2023 SAS Conference

If you missed the **Structured Literacy** presentation – view it at –

[Structured Literacy: Four Schools' Journey](#)

Join PDE/PaTTAN for a comprehensive overview of Chapter 49 as it pertains to structured literacy. Hear from four school districts who will share their journeys in implementing structured literacy. Learn how they use data and resources, overcome obstacles, and achieve progress. Engage with presenters, ask questions, and walk away with valuable resources and contact information. Make structured literacy a transformative experience for your students, teachers, and school!





## From PA Office of Child Development and Early Learning (OCDEL) and Early Intervention Technical Assistance (EITA)

### Let's Chat About Early Language and Literacy

Join the PA Office of Child Development and Early Learning (OCDEL) and Early Intervention Technical Assistance (EITA) during the winter months for a series of 4 webinars on language and literacy development including information on structured literacy. These webinars will provide resources to share with families and use in classrooms and centers. These one-hour webinars will be offered for FREE from 1pm to 2pm on the dates listed below:

- February 2<sup>nd</sup>, 2024: Let's Chat About: Talking with Young Children
- February 16<sup>th</sup>, 2024: Let's Chat About: Bringing the Read Aloud to Life
- March 1<sup>st</sup>, 2024: Let's Chat About: Sounds Abound – Phonological Fun!
- March 15<sup>th</sup>, 2024: Let's Chat About: Emergent Writing and Print All Around Us

PQAS credit hours, Infant Toddler hours, and ACT48 hours are available for these webinars. [Get additional information on topics, credits and registration.](#)



NOTE: Sites identified here have been reviewed by the content advisor; however, educators are advised to preview for appropriateness for their respective classrooms. The mention of trade names, commercial products, or organizations does not imply endorsement by PDE.

eBlast contact information: Jennifer Wicht, [jwicht@pa.gov](mailto:jwicht@pa.gov)