

PDE - English Language Arts LEARNING COMMUNITY



WHO WE ARE

Welcome to the [PDE - English Language Arts Learning Community](#). The Learning Community provides an avenue to connect with educators of all levels across the Commonwealth.

The Learning Community also provides a collaborative environment to extend and enhance the discussion of important issues with PDE staff and colleagues regarding teaching, learning, and assessing.

Please join us by discussing and sharing important issues, challenges, and ideas that promote the effective and successful teaching, learning, and assessing of ELA throughout the Commonwealth.

FEATURED PODCAST

Author and international educator Ann Lautrette, describes a co-constructed classroom as a space where students are valued and empowered, where teachers and students work together to plan learning, to do learning, and to assess learning.

[Podcast: Guiding Teachers to Build Co-Constructed Classrooms](#)

Approximately 25 minutes

DID YOU KNOW ...



SAS INSTITUTE 2023
Successful Leadership
Shaping your school's story



REMINDER
Click here to
REGISTER NOW
www.tinyurl.com/SAS-2023

ACT 70

Act 70 Holocaust, Genocide, and Human Rights, optional survey

Act 70 was signed into legislation in 2014 by Governor Tom Corbett to provide children with an understanding of the importance of protecting human rights and the potential consequences of unchecked ignorance, discrimination, and persecution.

To further this goal, the Act 70 Committee seeks to solicit data on the state of Holocaust, Genocide, and Human Rights initiatives across the Commonwealth. Participating in this optional survey will assist the Committee in its mission to offer professional development support to LEAs interested in participating.

Click here for the [Act 70 Holocaust, Genocide, and Human Rights Optional Survey](#).

Seeking a broad LEA perspective, the Committee suggests one survey submission per LEA.

Deadline to submit is November 17, 2023.

From the Special Education Office at PDE

The PA Alternate System of Assessment Dynamic Learning Maps, referred to as PASA DLM, is the state alternate assessment for students with significant cognitive disabilities. It is produced by the University of Kansas and the Accessible Teaching, Learning, and Assessment Institute.

The PDE PASA DLM team would like to share an opportunity for middle and high school teachers to participate in a study conducted by the Accessible Teaching, Learning, and Assessment Systems (ATLAS) at the University of Kansas.

The purpose of the study is to understand better what text-dependent analysis (TDA) instruction looks like in middle and high school grades. In this study, middle and high school teachers will describe their perspectives and experiences with TDA instruction in the classroom. The project's findings will support a grant proposal to develop a learning-map-based intervention to improve TDA performance in these grades.

For additional information or to indicate your interest in participating in the study, please contact your local Intermediate Unit (IU) TAC.



PDE ELA and SL LISTENING SESSIONS



pennsylvania
DEPARTMENT OF EDUCATION

Who: ELA and SL Education Leaders (IU & Districts)

What: Taking a pulse on all things ELA and SL in PA!

When:

IU's: November 7, 2023 - 9-10 am IU 8, 10, 11, 12, 13, 15

District Admin & Educators: November 8, 2023 - 9-10 am IU 8, 10, 11, 12, 13, 15

IU's: November 14, 2023 - 3:30-4:30 pm IU 1, 2, 3, 4, 5, 6, 7, 27, 28

District Admin & Educators: November 15, 2023 - 3:30-4:30 pm IU 1, 2, 3, 4, 5, 6, 7, 27, 28

If you cannot attend on your date/time, you are welcome to choose another.

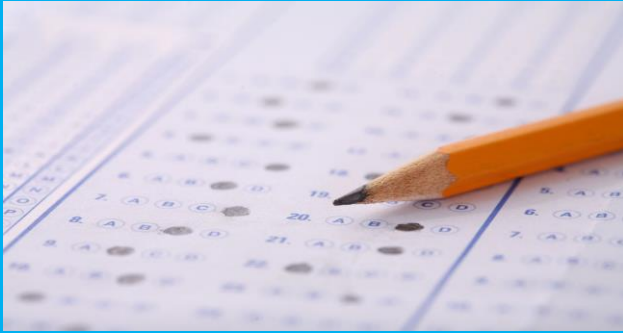
Where: Zoom

[Register Here: PaTTAN.net](https://paTTAN.net)

Jennifer Wicht, PDE ELA Advisor jwicht@pa.gov

Kate Bacher, PDE SL Advisor kabacher@pa.gov

Beth Gannon, PDE ELA Assessment Specialist egannonrit@pa.gov



Calling on ELA Teachers!

Pennsylvania educators play an important role in reviewing items for the PSSA and Keystone tests.

Each summer, educators from all over the Commonwealth engage in setting ranges for open-ended questions, reviewing new test items, and reviewing data from field-tested items.

If you are interested in participating, complete the [**Educator Application: PSSA & Keystone Exams Assessment Committee Reviews**](#).

Your application will be evaluated, and your name will be placed in a pool of educators.

You will receive an availability survey in the winter, and committees will be formed in early spring.

Contact Beth Gannon, ELA Assessment Advisor, with questions at [**egannonrit@pa.gov**](mailto:egannonrit@pa.gov).

REFLECTING on INSTRUCTION

Paragraph Shrinking

Paragraph shrinking is an activity developed as part of the Peer-Assisted Learning Strategies (PALS).

The paragraph shrinking strategy allows each student to take turns reading, pausing, and summarizing the main points of each paragraph. Students provide each other with feedback as a way to monitor comprehension.

[**Paragraph Shrinking Activity**](#)



FARM CITY DAY

The Pennsylvania Department of Agriculture will once again be hosting Farm City Day Central PA. The event will be returning to the Farm Show Complex May 8th and 9th of 2024.

Use the link below to register your school today!

[Farm City Day 2024](#)



Save the date! From May 8-9, 2024, we invite students from across the commonwealth to the Pennsylvania Farm Show Complex and Expo Center in Harrisburg for an opportunity to discover Pennsylvania agriculture. They can explore and learn through a variety of hands-on activities and engaging educational stations at Farm City Day Central PA.

Mark your calendar! Give students a chance to learn about ag's connections to science, math, nutrition, geography, and more.

QUESTIONS?

Contact Sara Gligora at sgligora@pa.gov



SEE YOU IN SPRING 2024!

NOTE: Sites identified here have been reviewed by the content advisor; however, educators are advised to preview for appropriateness for their respective classrooms. The mention of trade names, commercial products, or organizations does not imply endorsement by PDE.

eBlast contact information: Jennifer Wicht, jwicht@pa.gov